

SID Chart showing standard symbols and features

v.6 updated 16/02/09

Extracts from Stansted SID Chart for Barkway, Buzad and Compton SIDs from Runway 23. Full chart available free from <http://www.nats-uk.ead-it.com/public/index.php.html>

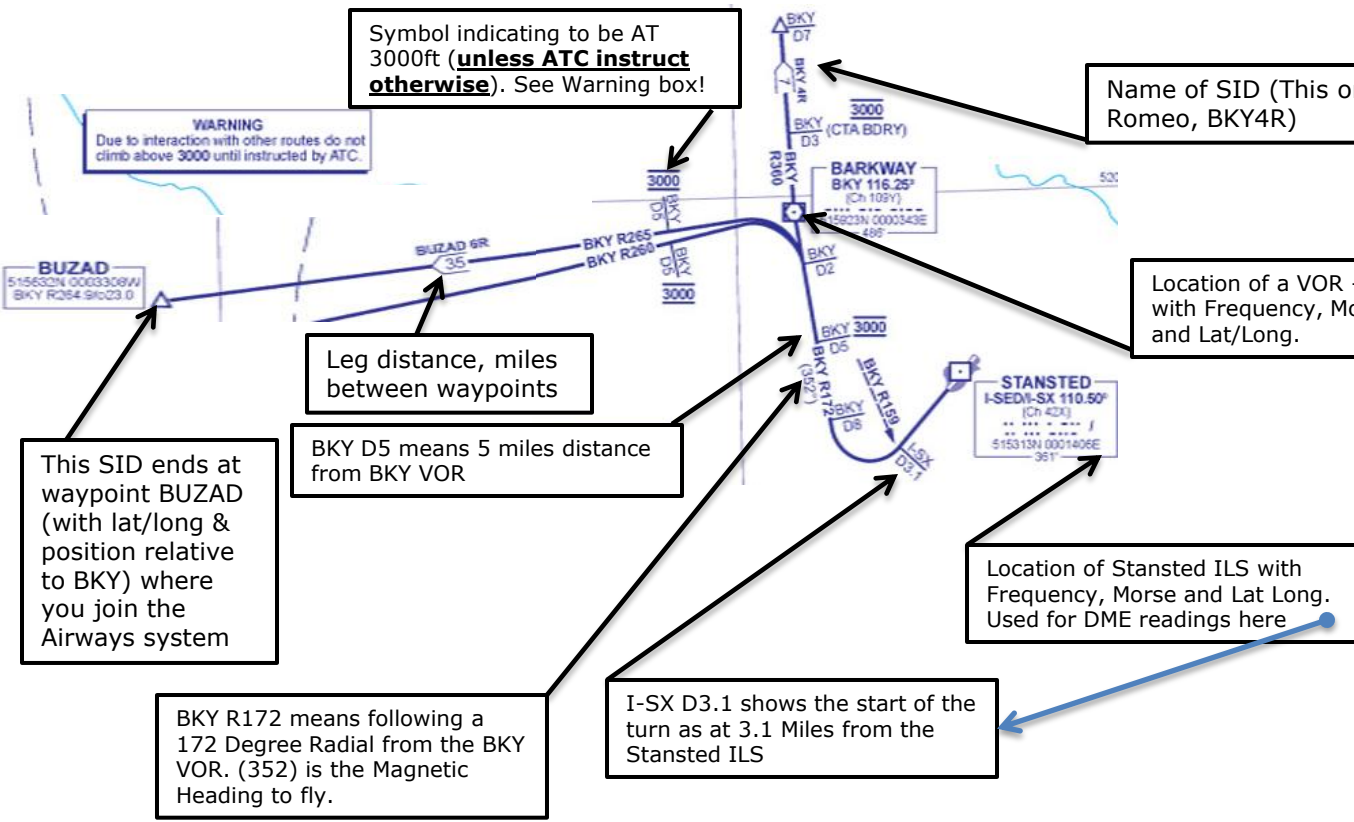
A properly updated and set FMC can fly these procedures for you BUT you must check the FMC against the chart (**NEVER** assume your FMC is correct) and take particular notice of the altitude constraints. **These are vital**. Reading this chart also gives you the info to fly it manually or semi-automatically.



Minimum Sector Altitude (MSA) in each direction from the airport

Transition Altitude. This is the point where in the climb you set Standard Pressure (1013) and use Flight Levels not Altitudes (feet). In the descent as you pass this altitude you switch to local QNH (as advised by ATC) and revert to altitudes for the remainder of the descent.

NOTE: this altitude varies by airfield so ALWAYS check this box for SIDS and STARS!



Symbol indicating to be AT 3000ft (**unless ATC instruct otherwise**). See Warning box!

Name of SID (This one is a Barkway 4 Romeo, BKY4R)

Location of a VOR – Barkway (BKY) with Frequency, Morse Code Ident and Lat/Long.

This SID ends at waypoint BUZAD (with lat/long & position relative to BKY) where you join the Airways system

Leg distance, miles between waypoints

BKY D5 means 5 miles distance from BKY VOR

Location of Stansted ILS with Frequency, Morse and Lat Long. Used for DME readings here

BKY R172 means following a 172 Degree Radial from the BKY VOR. (352) is the Magnetic Heading to fly.

I-SX D3.1 shows the start of the turn as at 3.1 Miles from the Stansted ILS

Text description of SID Buzad 6R from Runway 23. One text box per SID at bottom of chart

BUZAD 6R 23 Climb straight ahead. At I-SX 03.1 (BKY VOR R159) turn right onto BKY VOR R172 by BKY D8. Crossing BKY VOR R174 05 at 3000. At BKY D2 turn left onto BKY VOR R265 to BUZAD (BKY VOR R265 023). Crossing BKY VOR R265 05 at 3000. L10, T420 northbound.

Indicates the airways that this SID joins so if your route takes airway T420 north and it's runway 23 then you **will** get a Buzad 6R departure and join your airway at Buzad

